

VILLA MEDICI™



live inspired





DISTRESSED, WORN AND RANDOMLY COLORED LIKE ANCIENT COTTO

Artisanal, hand-crafted cottos with worn, softened edges inspired Villa Medici, but Ragno USA has taken its latest glazed porcelain to new levels of sophistication with hybrid glaze technologies. Both 3d digital print techniques and roller applications are used to achieve this extraordinary residential series that features its own built-in deco. These innovative techniques achieve vastly ranged colors and surface designs within each piece.

Villa Medici translates as a high-end upgrade to any room in the house. Sizes available include 6½"x6½", 6½"x13", 13"x13", 12"x24" and 20"x20", so layout designs are easily tailored for personal expression. Transitions from large-module floors to smaller-scale wall formats are incredibly simple. Backsplashes tie in with countertops; focus walls accentuate floors; shower and tub surrounds invite design free-play.

The sheer breadth of Villa Medici creative possibilities inspires modern-day castle builders to customize their dream homes. Five sizes of field and decos, four field and mosaic colors, plus bullnose trim... so many alternatives! Randomly included within each color and size of the series are intricate diamond geometric decoratives that further reinforce the hand-crafted feel of ancient cotto. These small-scale, intricate patterns juxtapose artistically with the field pieces. Complementing the mix is a 2"x2" mesh-mounted mosaic and bullnose in each color.











20"x 20"
 12"x 24"
 13"x 13"
 6 1/2"x 13"
 6 1/2"x 6 1/2"



AM6K BI
 20"x20"



AM6P BI
 12"x24"



AM6L BL
 20"x20"



AM6Q BL
 12"x24"



AM6F BI
 13"x13"



AM6B BI
 6 1/2"x13"



AM67 BI
 6 1/2"x6 1/2"



AM6G BL
 13"x13"



AM6C BL
 6 1/2"x13"



AM68 BL
 6 1/2"x6 1/2"



AM6T BI
 Mosaic - Square 2"x2"
 13"x13"



AM6U BL
 Mosaic - Square 2"x2"
 13"x13"

TRIMS



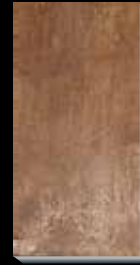
- AM6X BI** Bullnose
- AM6Y BL** Bullnose
- AM6Z GR** Bullnose
- AM72 TC** Bullnose
 3"x13"

20"x 20"
 12"x 24"
 13"x 13"
 6 1/2"x 13"
 6 1/2"x 6 1/2"



AM6M GR
20"x20"

AM6R GR
12"x24"



AM6N TC
20"x20"

AM6S TC
12"x24"



AM6H GR
13"x13"

AM6D GR
6 1/2"x13"

AM69 GR
6 1/2"x6 1/2"



AM6J TC
13"x13"

AM6E TC
6 1/2"x13"

AM6A TC
6 1/2"x6 1/2"



AM6V GR
Mosaic - Square 2"x2"
13"x13"



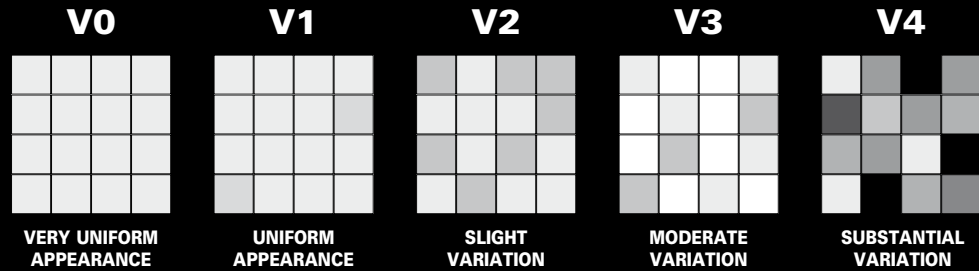
AM6W TC
Mosaic - Square 2"x2"
13"x13"

SHADE VARIATIONS

The color and shade of all tiles vary to some degree. This variance can be from piece to piece and can also occur from production run to production run.

American National Standard Specifications for Ceramic Tile (ANSI) has implemented a guide that rates ceramic tile on a five-point scale and ranges from V0 through V4.

Instituting the ANSI's color shade variation guidelines you will reduce customer complaints and sell the unique and individual beauty of each ceramic tile.



V0 Very Uniform Appearance

Pieces of the same shade value are very uniform and smooth in texture.

V1 Uniform Appearance

Differences among pieces from the same production run are minimal.

V2 Slight Variation

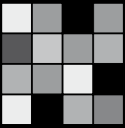
Clearly Distinguishable differences in texture and/or pattern within similar colors.

V3 Moderate Variation

While the colors and/or texture present on a single piece of tile will be indicative of the colors and/or texture to be expected on the other tiles, the amount of colors and/or texture on each piece may vary significantly. It is recommended that the range be viewed before selection.

V4 Substantial Variation

Random color and/or texture differences from tile to tile, so that one tile may have totally different colors and/or texture from that on other tiles. Thus, the final installation will be unique. It is recommended that the range be viewed before selection.

SHADE VARIATION AND APPLICATIONS				
V4		Residential	Commercial	Industrial
 SUBSTANTIAL VARIATION	Floor	•		
	Wall	•	•	•
	Countertop	•	•	•

Water, oil, grease, or other fluids create slippery conditions. Floors with exposure to these conditions require extra caution in product selection and proper maintenance.

CARE & MAINTENANCE

Villa Medici™ is a stain-resistant porcelain tile. Routine maintenance will keep your tile looking new for years to come.

Ragno USA's products are typically easy to install and maintain using the following general guidelines:

- Choose tile from same dye lot and caliber whenever possible
- Select tile alternately from several boxes and rotate when installing
- Follow industry-accepted installation practices as detailed by Tile Council of America "Handbook for Ceramic Tile Installation" or those recommended by the Ceramic Tile Institute of America
- Remove all grout residue promptly after application; neither acid cleaning nor sealing is recommended
- Clean regularly with clear water and/or a neutral (soapless) cleaner, wipe dry to lessen slippery conditions

TECHNICAL SPECIFICATIONS

DESCRIPTION	ANSI STANDARD	RESULT	ASTM TEST METHOD
Water Absorption	≤ 0.50%	≤ 0.50%	C373
Frost Resistance	As Reported	Resistant	C1026
Scratch Resistance	MOHS 1-10	7	MOHS SCALE
Breaking Strength	≥ 250 lbf.	≥ 1079 lbf.	C648
Facial Dimension	- 3.0 % ≤ Nominal ≤ 3.0 %	Within Standard	C499
Thickness	≤ 0.04 in (1.02 mm max)	Within Standard	C499
Wedging (Squareness)	+/- 0.50 % or +/- 2.0 mm**	Within Standard	C502
Warpage (Flatness)	+/- 0.75 % or +/- 2.3 mm**	Within Standard	C485
Abrasion Resistance	Class 0 - Class V	Class IV	C1027
DCOF - Dynamic Coefficient of Friction (Wet Areas Only) [†]	As Reported	Less Than 0.42	DCOF AcuTest SM *
Chemical Resistance	Class A - Class E	Class A	C650
Stain Resistance	Class A - Class E	Class A	C1378

[†]Dynamic Coefficient of Friction (DCOF) - Water, oil, grease or other fluids create slippery conditions. When installing floors in areas with exposure to these conditions, a minimum D.C.O.F. value of 0.42 is required. Additionally, extra caution is required with regards to product selection and proper maintenance. Visit www.tcnatile.com for complete information regarding the DCOF Acutest test method and values.

*DCOF AcuTest is the industry designation for the test procedure contained in ANSI A137.1 Section 9.6, which has been extensively researched, allows for in-situ field measurements, and is in use at tile manufacturing facilities. It was so named to distinguish it from other DCOF measurements using different instruments and/or protocols.

** Whichever is less

PACKAGING

	SIZE	THICKNESS	BOX			PALLET		
			PCS	SQ FT	LBS	BOXES	SQ FT	LBS
Floor Tile	20" x 20"	3/8"	06	16.15	79.00	24	387.60	1896.00
Floor Tile	12" x 24"	3/8"	06	11.63	57.00	40	465.20	2324.00
Floor Tile	13" x 13"	5/16"	13	15.52	62.00	44	682.88	2728.00
Floor Tile	6 ¹ / ₂ " x 13"	5/16"	18	10.65	42.00	51	543.15	2142.00
Floor Tile	6 ¹ / ₂ " x 6 ¹ / ₂ "	5/16"	36	10.55	42.00	51	538.05	2142.00
Mosaic - Square 2"x2"	13" x 13"	Compatible	10		39.00			
Bullnose	3" x 13"	Compatible	20		21.00			



Floor Tile



Wall Tile



3d Printing Technique



Decorative Tile



Trim Available



Suitable for Outdoors



Substantial Variation



Frost Resistant



Abrasion Resistance



21% Minimum Pre-Consumer Recycled Content



No VOC

made in the
USA



Contributes to
LEED Credits



RAGNO  USA

RAGNO USA, Inc.
359 Clay Road East
Sunnyvale, TX 75182 USA
Telephone: 972.232.3802
Fax: 972.725.3127
Toll Free: 888.297.2466

E-mail: info@ragnousa.com
Web site: www.ragnousa.com

live inspired

