

LIFESTYLE COLOR BODY PORCELAIN TILE |  PRINTING TECHNIQUE



LIFESTYLE

*live inspired*





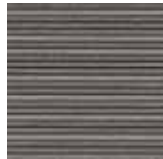
*live inspired*

# LIFESTYLE

COLOR BODY PORCELAIN TILE | RECTIFIED



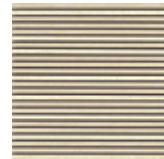
**R28U** Lifestyle AN  
24" x 48" Rectified  
**R26G** Lifestyle AN  
24" x 24" Rectified  
**R26Q** Lifestyle AN  
12" x 24" Rectified



**R2CX** Lifestyle AN  
Strip Mosaic  
12" x 12"



**R28S** Lifestyle BG  
24" x 48" Rectified  
**R26E** Lifestyle BG  
24" x 24" Rectified  
**R26N** Lifestyle BG  
12" x 24" Rectified



**R2CY** Lifestyle AN  
Strip Mosaic BG 12" x 12"



**R28R** Lifestyle BI  
24" x 48" Rectified  
**R26D** Lifestyle BI  
24" x 24" Rectified  
**R26M** Lifestyle BI  
12" x 24" Rectified



**R2CV** Lifestyle BI  
Strip Mosaic  
12" x 12"



**R28T** Lifestyle GR  
24" x 48" Rectified  
**R26F** Lifestyle GR  
24" x 24" Rectified  
**R26P** Lifestyle GR  
12" x 24" Rectified



**R2CW** Lifestyle GR  
Strip Mosaic  
12" x 12"

-  Floor Tile
-  Wall Tile
-  Rectified Tile
-  Decorative Tile
-  Suitable for Outdoors
-  Slight Variation
-  Frost Resistant
-  Meets ADA Recommendations
-  Abrasion Resistance
-  C.O.F. (Wet)
-  C.O.F. (Dry)
-  25% Minimum Pre-Consumer Recycled Content
-  Certified No VOC



Contributes to LEED Credits

## TECHNICAL SPECIFICATIONS

DESCRIPTION	ANSI STANDARD	RESULT	ASTM TEST METHOD
Water Absorption	≤ 0.50%	≤ 0.50%	C373
Frost Resistance	As Reported	Resistant	C1026
Scratch Resistance	MOHS 1-10	6.5	MOHS SCALE
Breaking Strength	24" x 48"	≥ 250 lbf.	≥ 783 lbf. C648
	24" x 24"	≥ 250 lbf.	≥ 818 lbf. C648
	12" x 24"	≥ 250 lbf.	≥ 605 lbf. C648
Facial Dimension	-3.0 % < Nominal ≤ 3.0 %	Within Standard	C499
Thickness	≤ 0.04 in (1.02 mm max)	Within Standard	C499
Wedging (Squareness)	+/- 0.25 % or +/- 0.8 mm*	Within Standard	C502
Warpage (Flatness)	+/- 0.40 % or +/- 1.3 mm*	Within Standard	C485
Abrasion Resistance	Class 0 - Class V	Class IV	C1027
C.O.F. (Wet)	As Reported	0.60 ≤ COF < 0.70	C1028
C.O.F. (Dry)	As Reported	0.70 ≤ COF < 0.80	C1028
Chemical Resistance	Class A - Class E	Class B	C650
Stain Resistance	Class A - Class E	Class A	C1378

\* Whichever is less

